

  
**PEPPER TREE**  
A p a r t m e n t s

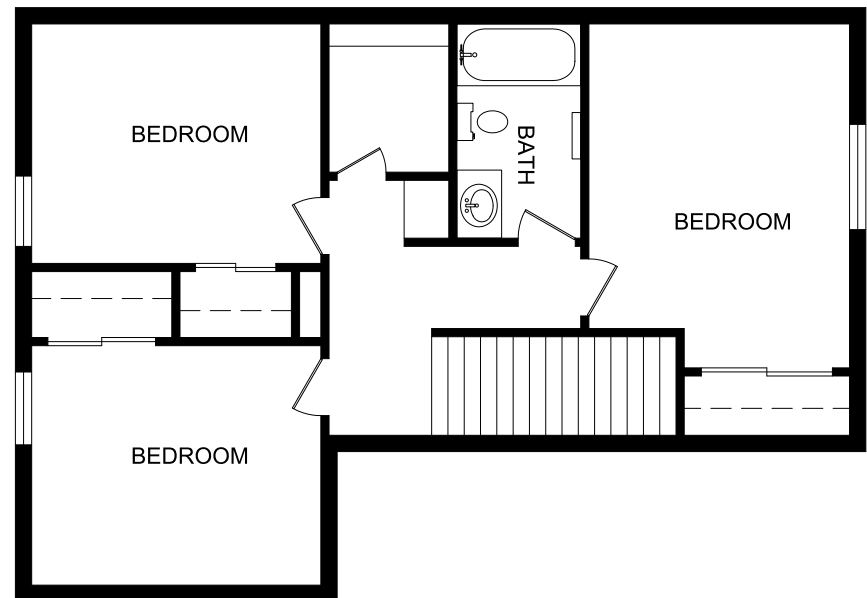
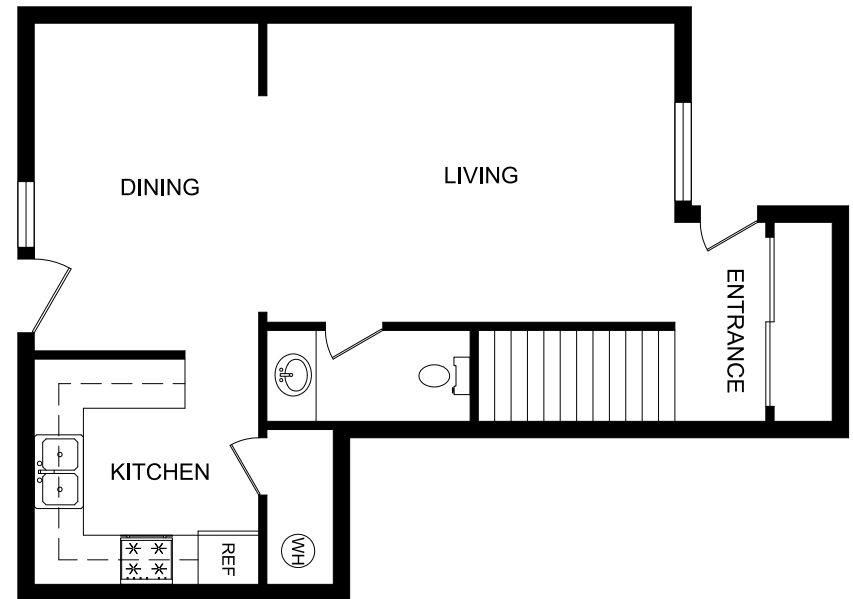
**Interior Luxuries Include:**

- Plush Carpet
- Frost-Free Refrigerator
- Spacious Floorplans
- Tiled Floors in Kitchen, Entry and Bath
- Exterior storage
- Large floor plans with great design

**Community Distinctions include:**

- On-Site Laundry Facilities
- Located close to shopping, entertainment and schools
- Superior resident service

**Clifton**  
**3 bedroom/2 bath room**  
**Approximately 1,082 square feet**



2540 15th St., Douglas, AZ 85607  
(520) 364-8927 \* (520) 364-2005 fax  
[www.peppertreeaz.com](http://www.peppertreeaz.com)



The floor plans may vary from this illustration due to design configuration. Not all features are available in every floor plan. Square footages and room dimensions are approximate. This institution is an equal housing opportunity provider

